

## Overview

### The Special, Universal, Low-Carbon/High-Moly Stainless Alloy

3880 is a maintenance-engineered alloy that provides outstanding results on the most common grades of stainless and the extra-low carbon versions of these alloys. Easy running and deslagging!



3880 Electrode



## Features/Benefits

- Extremely low carbon to minimize carbide precipitation that prevents intergranular corrosion
- Extra-high moly to improve corrosion- and heat-resistance
- Superior all-position welding qualities
- Easy deslagging, with outstanding bead appearance
- Excellent restrike capability
- Low amperage minimizes overheating
- Small 1/16" electrode size available for light gauge and fine work
- Available in MIG and TIG wire forms

## Applications

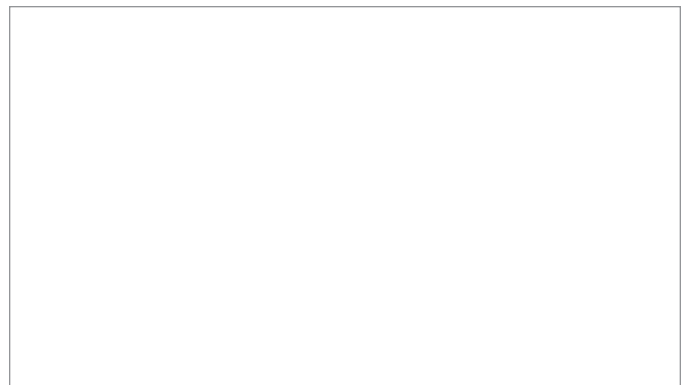
- Pipe fittings
- Pump housings and impellers
- Food-processing equipment
- Chemical plants
- Hospital equipment
- Stainless shafts
- Tanks and vats
- Dye equipment
- Valves
- Pharmaceutical plants

## Method of Application

AC or DC reverse polarity

## Identification

Printed gray electrode; MIG and flux-cored wire: labeled spool;  
TIG: flag tagged one end, 3880T-C unmarked



**Directions for Use**

Use AC or DC reverse polarity with normal maintenance welding procedures. Surface area should be as clean as practical, however, 3880 is manufactured with special cleansing and fluxing agents to promote sound welds under most conditions. Hold a medium to short arc and tilt electrode 10° in direction of travel. Remove slag between passes.

**Technical Specifications**

Tensile Strength: 90,000 PSI (621 MPa)  
 Elongation: Up to 42%  
 Machinability: Excellent

**Technical Tips**

When welding thin material, a short arc length reduces burn-through.

**3880M MIG Wire (GMAW)**

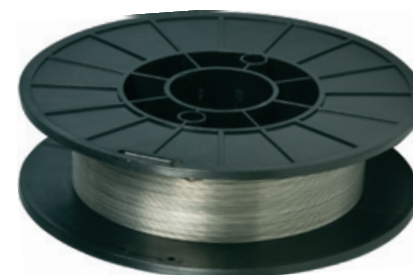
The same quality and easy running alloy as 3880 with extra-low carbon and High Moly. For typical operating parameters refer to Product Information Report PIRWE010.



**3880M-FC MIG Wire (GMAW)**

Flux-cored, small-diameter stainless steel wire offers the ultimate running characteristics, deposit rates and X-ray-quality welds.

For typical operating parameters refer to Product Information Report PIRWE010.



**3880T TIG Wire (GTAW)**

The first choice for precision welding of high-quality stainless steels in the medical, instrument and chemical industries.



**3880T-C TIG Wire (GTAW)**

Special flux coating that protects the back-side of the weld joint from oxidation, eliminating the need for back purging.

